

# Oak Park's EV Journey



Oak Park



Oak Park

# Ken Crowley Superintendent of Fleet Services

Worked for Oak Park in Fleet for 34 years, and have been Superintendent for the last 10.

Oak Park is 4.5 square miles.

Population of 52K.

Borders Chicago

Maintain around 250 pieces of equipment. Police, Fire, PW, Admin, Park Dist., and our Township.

Only municipality to attain Gold Level in Municipal EV Readiness from MMC. 2023



# VOLUNTEERED

2018 Village Hall parking lot project.

All new lighting.

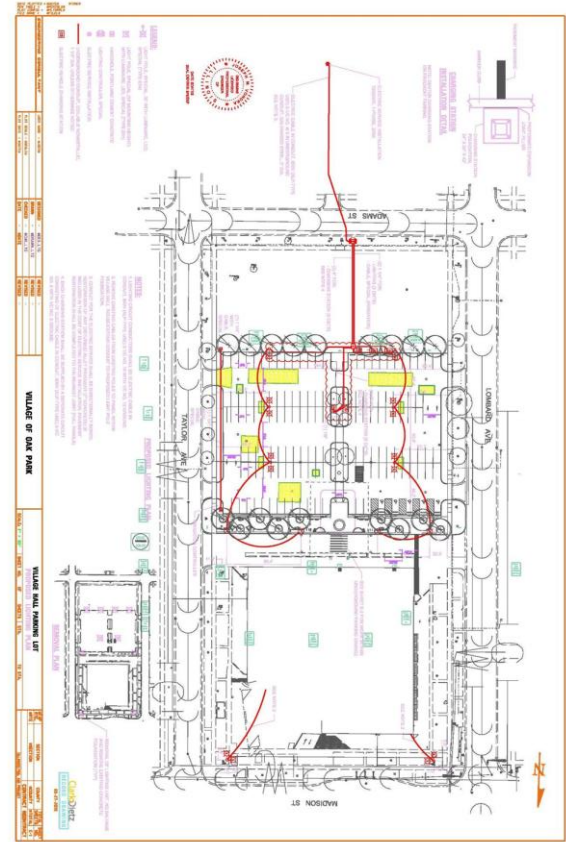
New parking spots plan.

Village Hall vehicles designated to back row.

Asked for input.

EV chargers in the back row. EVs are coming.

You should be on the committee.



# VEHICLES

Decommission Chevy Cavaliers

More chargers than EVs

Better equipped than a 2000 Chevy





# CHANGE

Devise operator education

Introduce EV fueling to novices

Promote perks/options

Dedicated parking

Highest users first

## EV LEAF OPERATION

Leafs operate differently than their gas counterparts. There will be no engine noise, the vehicle will not start, it will be on and ready to drive, or off and parked.

Turning on. Place foot on brake and press the start button to the right of the operator's knee. When button and dash illuminate, vehicle should be ready for operation.



To operate, place foot on brake and move shifter to desired position.



As seen in the diagram, move the shifter left, up and release for Reverse. Unit has a mild back up alarm when in Reverse.



## ELECTRIC VEHICLE CHARGING

vehicle is in need of charging, park at charging station. Press charge port hatch button on the remote.



Unlabeled covered port is the port you will use. Take Chargepoint card that is on key ring in vehicle and hold it in front of charging station. The plug will unlock and be ready to plug into vehicle. Push into port until it clicks.



Light on top of dash will indicate vehicle is charging.



When done press the release on charging plug, unplug it from vehicle and place it back into the charging unit. Close the charge port cover. That's it. I have been informed the electricity only when plugged into the vehicle, so rain will not be a factor when handling the plug when charging the units.

# PRESENT VH

2024 will have 19 EVs

2024 currently 23 Level 2 chargers

Stretch infrastructure

Not a shock to new employees

More employees in personal EVs.



# AMBASSADORS

Find like minded

Open minded

Use them to help spread the gospel

Early adopters

Experienced employees





# PRESENT PW

5 EV chargers

5 EVs

Planning for heavy equipment





# QUESTIONS

How many trips?

Hours of operation?

How many miles?

What do they carry?

Where is it housed?

Up fit requirements?

How much fuel do they use?

Can they share a vehicle?

Do they physically fit in choice vehicle?



# DATA

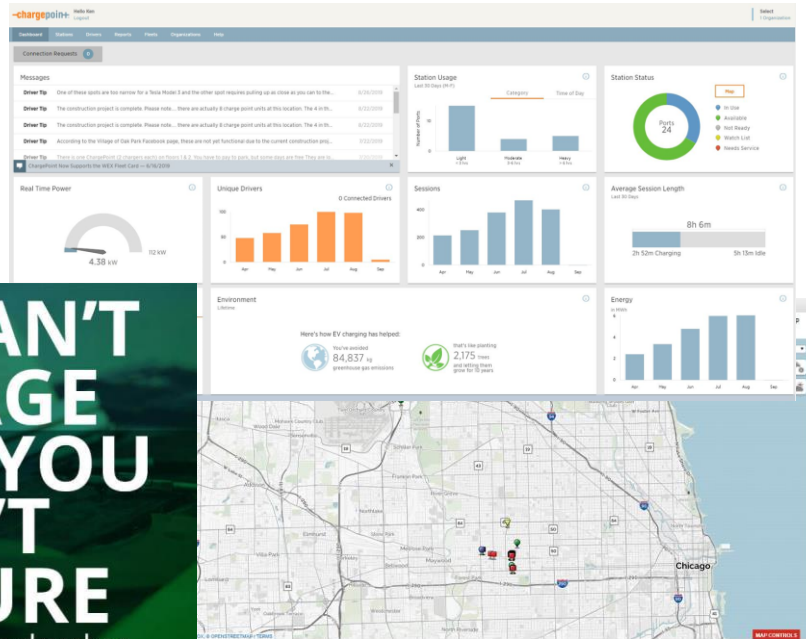
Fuel systems

Telematics/GPS

Charging system reports

Service records

Driver's reports



**YOU CAN'T  
MANAGE  
WHAT YOU  
DON'T  
MEASURE**  
-peter drucker

To	Apr 06, 2024
Days	7
Time Zone	America/Chicago
Max Power Limit	kW
Electricity Provider	kWh
Charging Cost	\$/kWh

Charge Events Each row corresponds to when charging starts (power > 0 W) to when it stops (power = 0 W).

Vehicle	Start Date	End Date	Location	Zone	Zone Type	Start Charge %	End Charge %	Energy Added	Max Power	Charging Cost
W 308	Apr 02, 2024 12:18	Apr 02, 2024 12:17	529 Lyman Ave, Oak Park, IL 60301 Village of Oak Park, Vill Home Zone, Curb	67.99%	100.00%	14.01	6.78	2441	6.78	2441
W 308	Apr 02, 2024 14:31	Apr 02, 2024 14:31	529 Lyman Ave, Oak Park, IL 60301 Village of Oak Park, Vill Home Zone, Curb	75.50%	99.00%	21.75	6.51	8978	6.51	8978
W 308	Apr 02, 2024 14:41	Apr 02, 2024 14:41	529 Lyman Ave, Oak Park, IL 60301 Village of Oak Park, Vill Home Zone, Curb	67.50%	99.00%	28.02	6.54	6953	6.54	6953
W 308	Apr 02, 2024 14:35	Apr 02, 2024 14:35	529 Lyman Ave, Oak Park, IL 60301 Village of Oak Park, Vill Home Zone, Curb	40.00%	100.00%	48.15	6.52	6521	6.52	6521
W 308	Apr 02, 2024 14:28	Apr 02, 2024 14:28	529 Lyman Ave, Oak Park, IL 60301 Village of Oak Park, Vill Home Zone, Curb	40.00%	99.00%	41.24	6.51	6876	6.51	6876
W 308	Apr 02, 2024 15:09	Apr 02, 2024 15:09	529 Lyman Ave, Oak Park, IL 60301 Village of Oak Park, Vill Home Zone, Curb	60.50%	99.00%	33.47	6.49	6830	6.49	6830
W 308	Apr 02, 2024 14:37	Apr 02, 2024 14:37	529 Lyman Ave, Oak Park, IL 60301 Village of Oak Park, Vill Home Zone, Curb	63.50%	64.00%	0.41	3.26	6028	3.26	6028
W 308	Apr 02, 2024 15:11	Apr 02, 2024 15:11	529 Lyman Ave, Oak Park, IL 60301 Village of Oak Park, Vill Home Zone, Curb	53.00%	98.00%	18.52	6.78	1997	6.78	1997
W 308	Apr 02, 2024 15:00	Apr 02, 2024 15:00	529 Lyman Ave, Oak Park, IL 60301 Village of Oak Park, Vill Home Zone, Curb	72.00%	96.00%	12.16	6.67	1929	6.67	1929
W 308	Apr 02, 2024 15:12	Apr 02, 2024 15:12	529 Lyman Ave, Oak Park, IL 60301 Village of Oak Park, Vill Home Zone, Curb	16.00%	100.00%	52.07	6.78	2244	6.78	2244
W 308	Apr 02, 2024 14:57	Apr 02, 2024 14:57	529 Lyman Ave, Oak Park, IL 60301 Village of Oak Park, Vill Home Zone, Curb	34.00%	100.00%	24.54	6.78	16865	6.78	16865
W 308	Apr 02, 2024 15:08	Apr 02, 2024 15:08	529 Lyman Ave, Oak Park, IL 60301 Village of Oak Park, Vill Home Zone, Curb	17.00%	43.00%	9.01	6.67	16838	6.67	16838
W 308	Apr 02, 2024 15:02	Apr 02, 2024 15:02	529 Lyman Ave, Oak Park, IL 60301 Village of Oak Park, Vill Home Zone, Curb	46.00%	100.00%	7.06	6.22	13170	6.22	13170
W 308	Apr 02, 2024 14:32	Apr 02, 2024 14:32	529 Lyman Ave, Oak Park, IL 60301 Village of Oak Park, Vill Home Zone, Curb	36.00%	100.00%	23.84	6.22	13962	6.22	13962
W 308	Apr 02, 2024 14:28	Apr 02, 2024 14:28	529 Lyman Ave, Oak Park, IL 60301 Village of Oak Park, Vill Home Zone, Curb	23.00%	100.00%	27.17	6.78	13439	6.78	13439
W 308	Apr 02, 2024 14:28	Apr 02, 2024 14:28	529 Lyman Ave, Oak Park, IL 60301 Village of Oak Park, Vill Home Zone, Curb	49.00%	100.00%	20.16	6.78	13379	6.78	13379



# FUTURE

Municipal duty cycles

Municipal budgets

Emergency situations

Evolving technology

Equipment availability

Geographical conditions

Services required



# RESOURCES

IACT formerly Chicago Clean Cities

APWA

NAFA

Metropolitan Mayors Caucus

Municipal Fleet Managers Association

Neighboring municipalities





“

In the proper  
application.

EVs make sense.



Oak Park



Oak Park