

## [The Equiticity Racial Equity Movement](#)



## Agenda

- About Equiticity
- The Go Hub
- Discussion





## About Equiticity

**Founded in 2017**

**Mission**

**Vision**

**Philosophies**

- Operationalizing Racial Equity and Mobility Justice
- Community Ownership of the Transportation Planning Process
- Integration of Physical Infrastructure and Social Infrastructure
- CBO-Led, Neighborhood-Based Mobility Models
- Neighborhood Demand Generation

**Focus Areas (Pillars)**

- Research
- Advocacy
- Programs
- Community Mobility Rituals
- Social Enterprises



## The Go Hub: A Community Mobility Center



## About The Go Hub

### Equiticity's model for a neighborhood mobility hub

- Hardware (physical infrastructure)
- Software (social infrastructure)
- Physical Building
- Outdoor Gathering Space





## About The Go Hub

### Hardware (Physical Infrastructure)

- Streetscape Infrastructure
- Transit Infrastructure
- Shared Mobility Devices
  - E-bike bikeshare system
  - E-bike library
  - E-cargo bikes
  - E-scooters
  - Electric vehicles



## About The Go Hub

### Software (Social Infrastructure)

- Mental Health Services
- Healing Services (meditation, yoga, etc)
- Community Mobility Rituals
- Workforce Development Training
- Youth Programs
- Hyperlocal Advocacy Coalition



## About The Go Hub

### Community Ownership & Planning Process

- Community Advisory Council
- Focus Groups
- One on One Interviews
- Design Charrettes
- Site Visits
- Community Mobility Rituals





## About The Go Hub

### Site Design

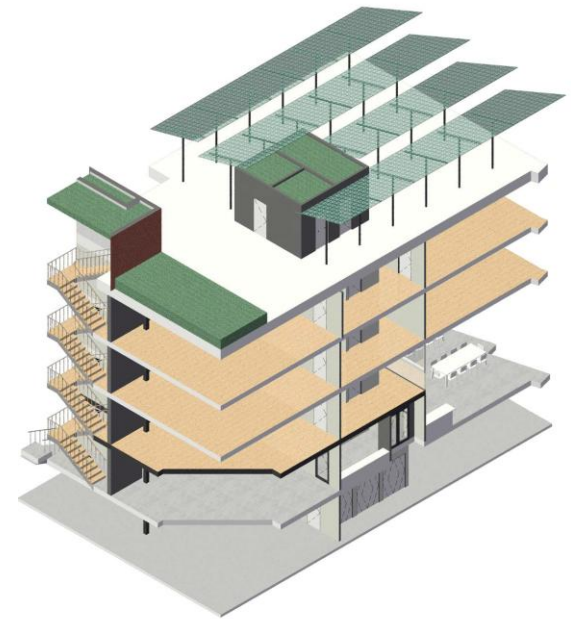
- Ideal Site
  - Adjacent to transit
  - Near high density affordable housing
  - Near ample retail
- Physical Building
  - Sustainable, carbon neutral building
  - Solar roof array
  - Rooftop garden
  - Geothermal
  - Microgrid
  - Shared mobility devices onsite
  - Two high density, affordable housing satellite sites
- Outdoor Gathering Space
  - Curated and programed for increased socialization



## About The Go Hub

### Impact

- Increase mobility at the neighborhood level
- Increase socialization
- Reduce violence
- Improve physical and mental health
- Create pathways to economic opportunities
- Reduce carbon footprint
- Improve air quality
- Attract additional development and investment
- Create neighborhood mobility hubs in Chicago



What happens when we turn on the **Power** and **Equity** moves like electricity through our homes, streets, neighborhoods and cities?

**EQUITICITY**  
POWER + EQUITY >



## Bikes, Birds, & Environmental Justice



**Turn on the Power  
and let Equity flow...**

